

## Eclipse Configuration of a TCP Socket For iCap

Eclipse can be configured to communicate with a closed caption encoder using three different methods: traditional modem settings for remote captioning, a direct connect for local captioning using a serial cable, or, in the case of iCap, a TCP/IP connection which will allow the iCap software and the Eclipse software to communicate when they are both installed on the same computer.

To configure a TCP Socket connection using Eclipse, please use the following instructions and screen shots as examples.

On the “Realtime” tab, under “Output formats” click “Add” as shown in Figure 1.

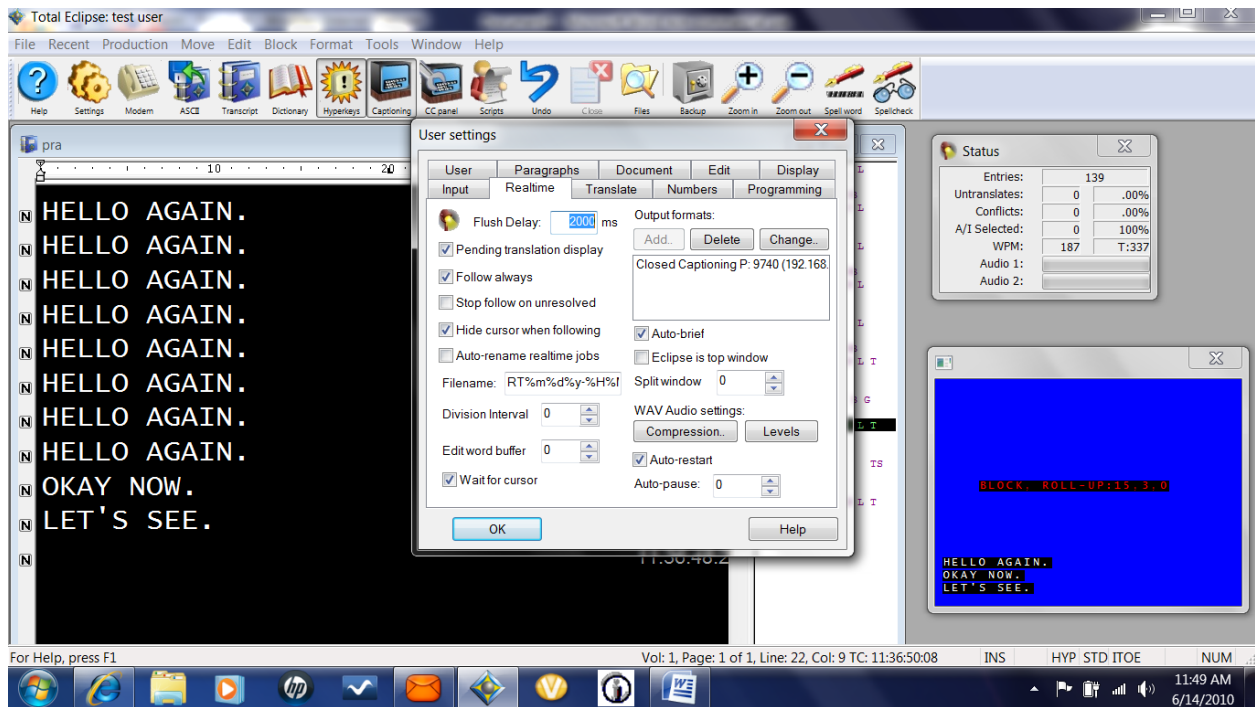
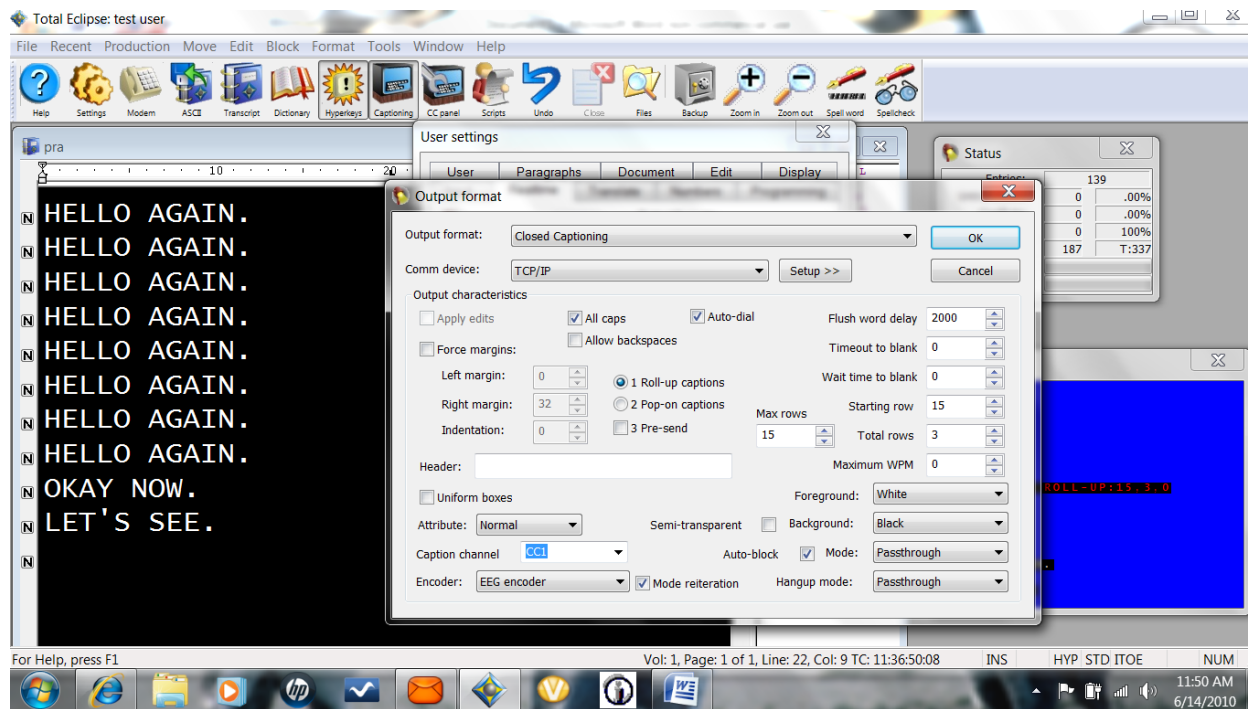


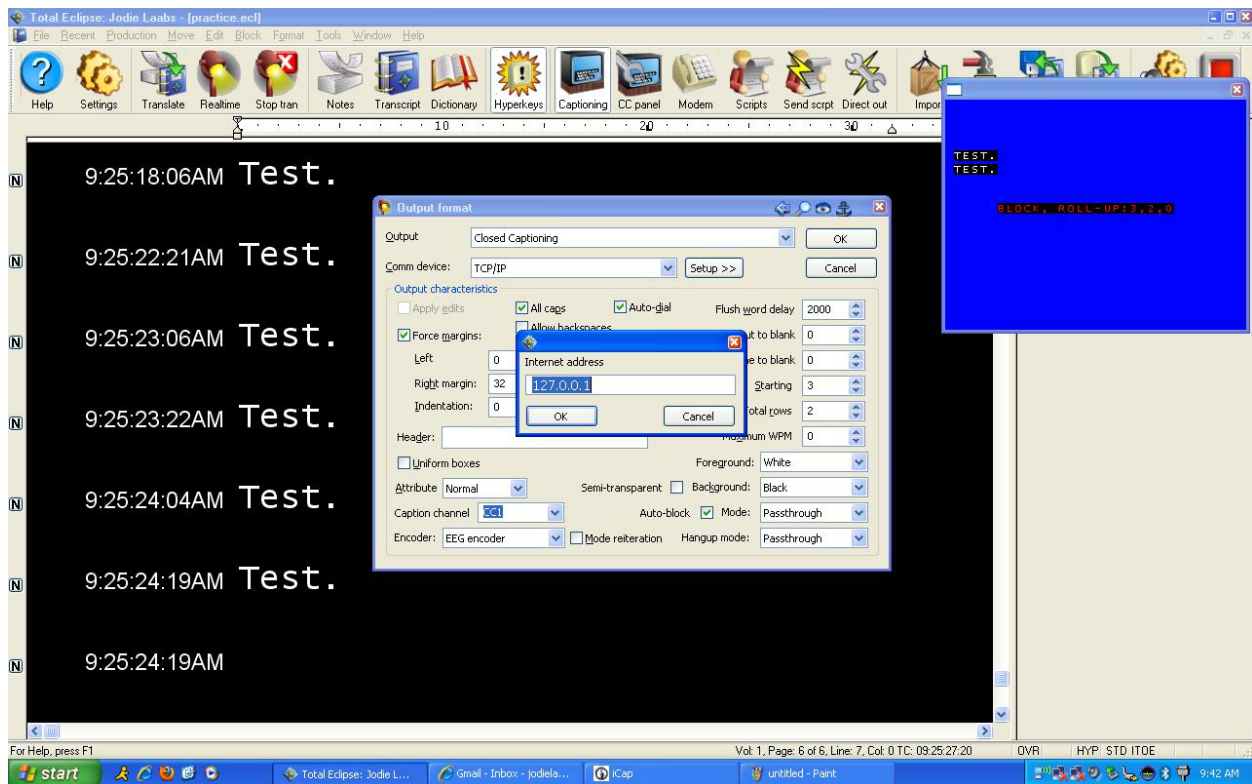
Figure 1 - Add new output format

In the “Add new output format” screen, select “Closed Captioning” in “Output format”, then select “TCP/IP” in “Comm device” as shown in Figure 2.



**Figure 2 - Output format settings**

Click "Setup", then, in the "Internet address" screen, enter the IP address 127.0.0.1 which loosely translates in network-speak to "me". This configuration page is shown in Figure 3. This IP address is used for network communication that is local to one computer. Since the network communication traffic in this case is between the writer software and the iCap software, 127.0.0.1 is the IP address that should be used.



**Figure 3 - Configuration of Internet Address**

Click “OK”, then enter the port number, which is “9740”, as shown in Figure 4.

To caption using Eclipse and iCap, launch the iCap application first. iCap creates the socket used for communication between Eclipse and iCap. Once you have launched iCap and have logged in, launch Eclipse and select the iCap configured Output Format. To test communication between the two pieces of software, from the iCap menu, select “Tools” then “Test Caption Input”. To keep the iCap windows from disappearing behind the Eclipse window, select “Always On Top” from the iCap “Window” menu. Now, as you write in Eclipse, you should see the text you are writing in the “Test Caption Input” window as shown in Figure 5. This text will include some black boxes, which are the required unprintable caption commands generated by Eclipse.



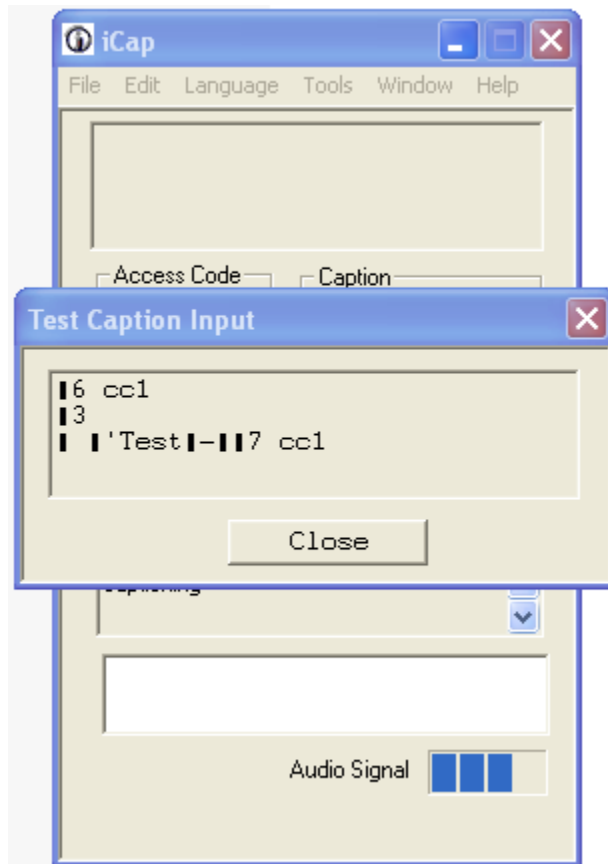


Figure 5 - Test Caption Input Example