

ProCat Configuration For iCap

ProCat must be configured to communicate with either a modem, for remote captioning, a direct connect, for local captioning to an encoder using a serial cable, or, in the case of iCap, a TCP socket connection which exists on the computer where the iCap PC client software and the writer software are installed.

To configure a TCP Socket connection using ProCat, please use the following instructions and screen shot as an example.

Open the “Realtime Setup Form” as shown in Figure 1. In the “Connection” section, check the box labeled “Internet”. If “Dial-up” is selected, change to “Local Connection”. Enter the IP Address: 127.0.0.1 which loosely translates in network-speak to “me”. This IP address is used for network communication that is local to one computer. Since the network communication traffic, in this case, is between the writer software and the iCap software, 127.0.0.1 is the IP address that should be used. Enter the Port No. 9740 as shown.

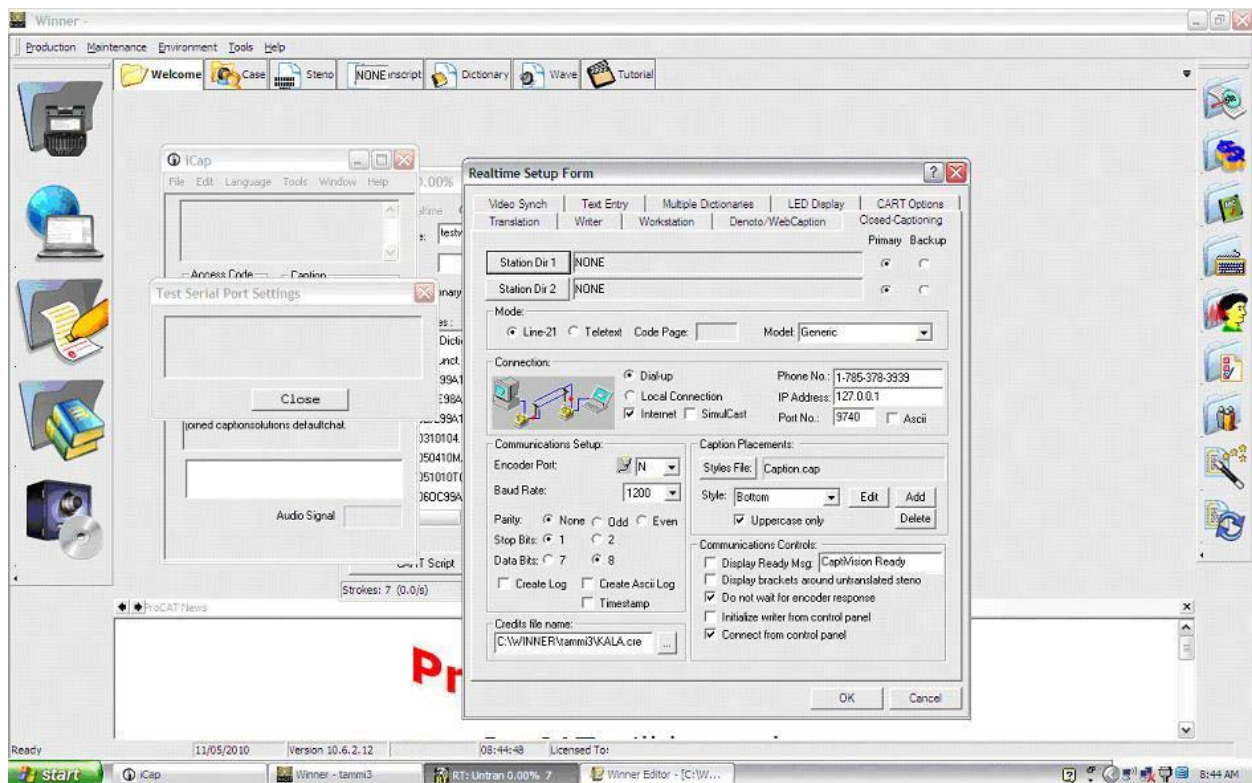


Figure 1 – ProCat Configuration

To caption using ProCat and iCap, launch the iCap application first. iCap creates the socket used for communication between ProCat and iCap. Once you have launched iCap and have logged in, launch ProCat using the Realtime configuration containing the iCap settings. To test communication between the two pieces of software, from the iCap menu, select "Tools" then "Test Caption Input". To keep the iCap windows from disappearing behind the ProCat window, select "Always On Top" from the iCap "Window" menu. Now, as you write in ProCat, you should see the text you are writing in the "Test Caption Input" window as shown in Figure 2. This text will include some black boxes, which are the required unprintable caption commands generated by ProCat.

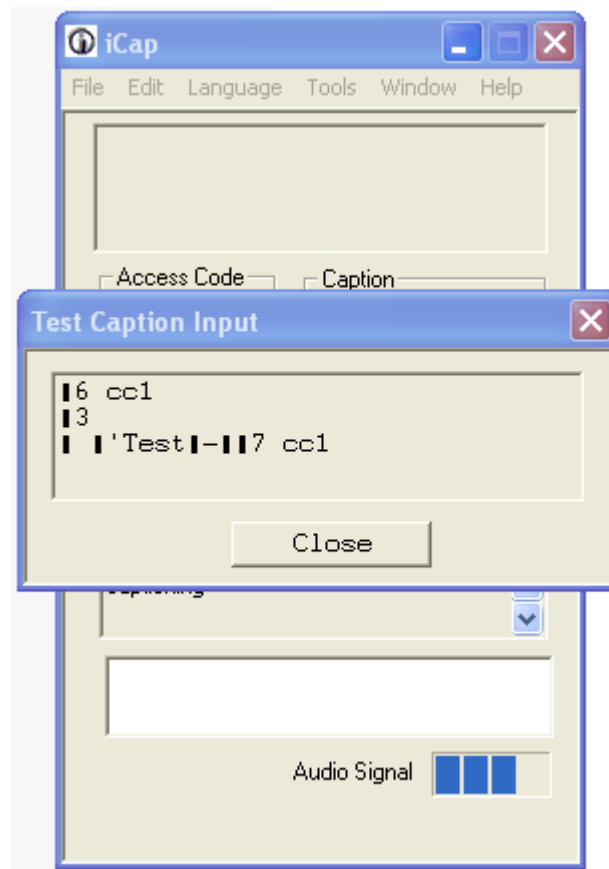


Figure 2 - Test Caption Input Example